

# Product Sales Guide



**Drying cabinets**

[www.primuslaundry.com](http://www.primuslaundry.com)

**Xtreme**  
in innovation

## Overview

- Drying cabinets are excellent complements to tumble dryers.
- The drying process is gentle because there is no mechanical action during the drying operation.
- The effective and gentle drying procedure extends the life-span of the garments and prepares for easier ironing and cold ironing.
- Drying cabinets are ideal for professional clothing and suits as well as for use in pre-schools, fire departments and industrial environments.



**DC4**



**DC8**



**DC16**



**FDC6**



## Drying cabinet DC4

- Capacity 4 kg
- Excellent drying cabinet for smaller spaces such as day-care centre
- Pull-out hanging system
- 3 temperature levels: High, Normal, Low
- Energy efficient
- Timer adjustable up to 4 hours
- Overheat protection
- Easy to install
- Dimensions 1915×595×615
- Weight 61 kg
- Standard: Four levels of hanging rails
- Option: Baskets to drip dry on a flat surface
- Transport: Assembled cabinet



## Drying cabinet DC8

- Capacity 8 kg, Complete hanging length of 17 metres
- Very low consumption and short drying time
- Double overheat protection for increased security
- Large display shows with symbols and text, information during the drying process.
- 3 temperature levels for manual programs and 2 automatic programs
- HTS – Humidity Tracking System – automatic program dries the clothes until they are dry, not a minute longer
- The doors open 190°
- Easy to install
- Dimensions 1870×1200×640 mm
- Weight 145 kg

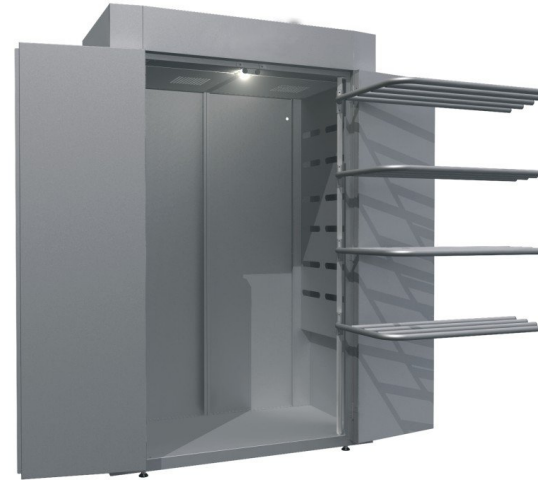




## Drying cabinet DC8



Single bar



Swinging rail

- Standard: Single bar / Swinging rail
- Option: Both (can not be used at the same time)
- Transport: Assembled cabinet (flat pack on request)
- Swinging rail: The unique hanging frame can be rotated 180°

**HTS**...  
Humidity Tracking System



Ideal for delicate garments that  
are not suitable for tumble dryers.



## Drying cabinet DC16

- Capacity 16 kg, Complete hanging length of 30 metres
- Very low consumption and short drying time
- Double overheat protection for increased security
- Large display shows with symbols and text, information during the drying process.
- HTS – Humidity Tracking System – automatic program dries the clothes until they are dry, not a minute longer
- 3 temperature levels for manual programs and 2 automatic programs
- The doors open 190°
- Easy to install
- Dimensions 1955×1800×800 mm
- Weight 235 kg



## Drying cabinet DC16



Single bar



Swinging rail

- Standard: Single bar / Swinging rail
- Option: Both (can not be used at the same time)
- Transport: Non-assembled cabinet
- Swinging rail: The unique hanging frame can be rotated 90°

**HTS**...  
Humidity Tracking System

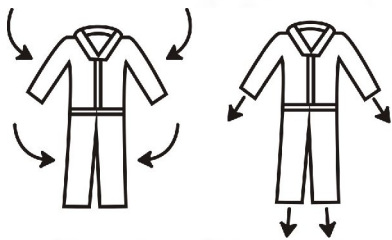


Ideal for delicate garments that  
are not suitable for tumble dryers.



## Drying cabinet FDC6

- Capacity 6 large overalls equal to 30 kg
- Especially developed for drying heavy duty overalls i.e. fire brigades...
- One system dries the overalls from the outside. Other from the inside
- HTS – Humidity Tracking System – automatic program dries the clothes until they are dry, not a minute longer
- Drying procedure hardens the impregnation



Two heating systems  
= short drying time





## Drying cabinet FDC6

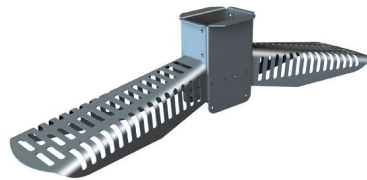
- Detachable hangers and racks for easier handling
- Easy to install
- Large display shows with symbols and text, information during the drying process
- Up to 9 automatic programmes
- Dimensions 1955×1800×800 mm
- Weight 200 kg



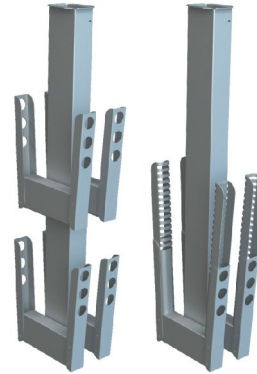
Large display



## Drying cabinet FDC6



Hanger for overall



Racks for gloves  
and boots



Hooks for ancillary garments

- Standard: 6 special hangers for 6 overalls
  - Option: Extra hanger for gloves and boots
- Door mounted frame of hooks for ancillary garments
- Transport: Non-assembled cabinet

**HTS**...  
Humidity Tracking System



Ideal for delicate garments that  
are not suitable for tumble dryers.



# Markets



**Fire brigades**



**Army**



**Multi-housing**



**Campings**



**Nursing homes**



**Kindergartens**